

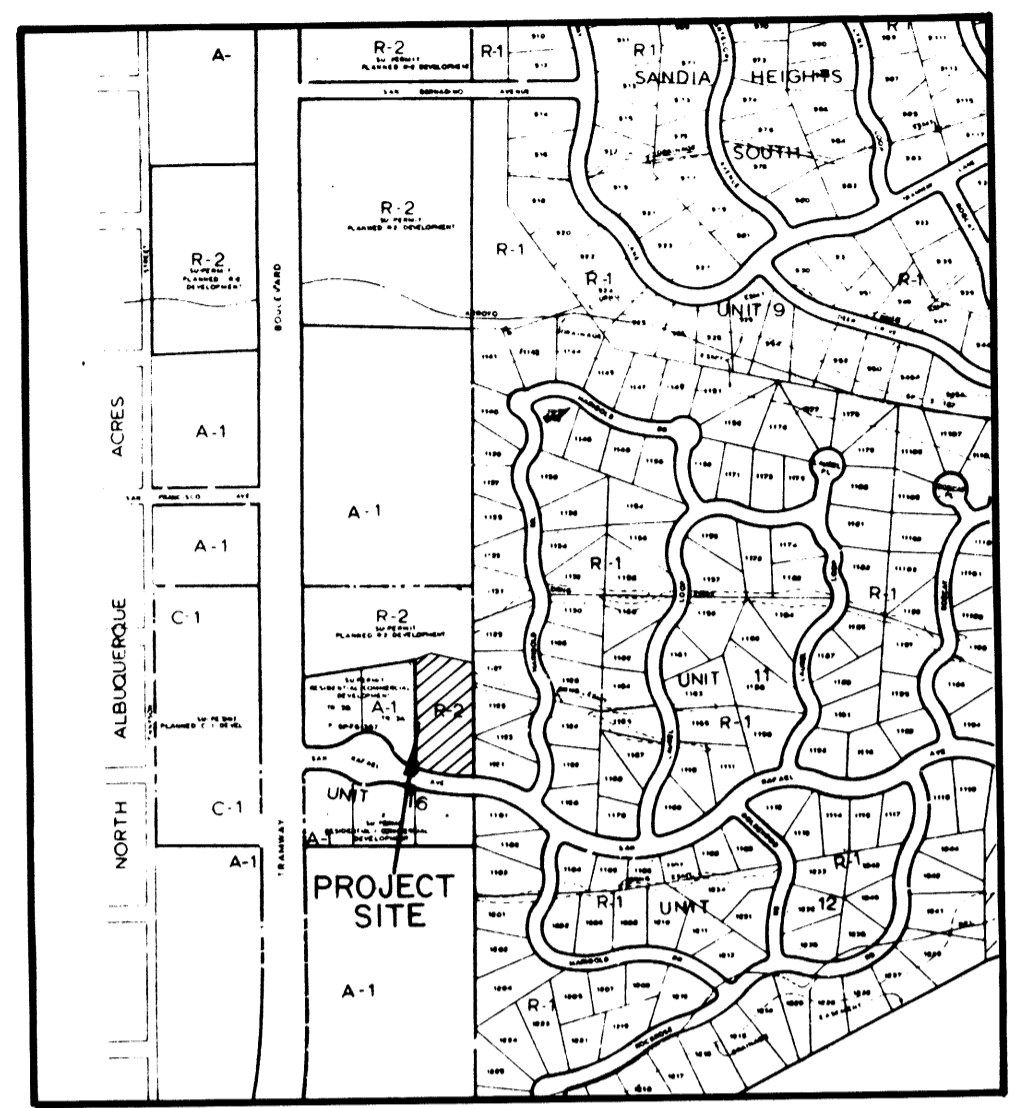
C24-118-1

84 52739

REPLAT OF
LOTS 1901 THRU 1912
SANDIA HEIGHTS SOUTH
UNIT 19
(FILED: OCTOBER 20, 1983)
NOW COMPRISING

LOTS 1901-A THRU 1912-A
SANDIA HEIGHTS SOUTH
UNIT 19
BERNALILLO COUNTY, NEW MEXICO
MAY, 1984

State of New Mexico } SS
County of Bernalillo }
This instrument was filed for record
on JUL 12 1984
At 10:00 clock P.M. Recorded in Vol. 119
of records of said County Folio 119
Dwain Weaver, Clerk & Recorder
Deputy Clerk



LOCATION MAP
Zone Atlas Map No D-23-Z

DEDICATION

The foregoing Replat of that certain tract of land situate in the City of Albuquerque, Bernalillo County, New Mexico, being and comprising Lots 1901 thru 1912, SANDIA HEIGHTS SOUTH, UNIT 19, as the same is shown and designated on the plat filed in the office of the County Clerk of Bernalillo County, New Mexico on October 20, 1983; And now hereon shown and comprising Lots 1901-A thru 1912-A, SANDIA HEIGHTS SOUTH, UNIT 19 is with the free consent and in accordance with the desires of the undersigned owners and/or proprietors thereof and said owners and/or proprietors do hereby grant the use and access easements as shown hereon, including the right of ingress and egress and the right to trim interfering trees. Any drainage rights-of-way shown hereon are also rights-of-way for underground sewer and water lines.

SANDIA PEAK TRAM COMPANY

Robert M. Murphy
Robert M. Murphy
Vice-President
State of New Mexico ss.
County of Bernalillo)

The foregoing instrument was acknowledged before me this 12th day of July 1984, by Robert M. Murphy, Vice-President, Sandia Peak Tram Company, a New Mexico Corporation on behalf of said Corporation.

My Commission Expires: 6-23-85
Clayton D. Baker
Notary Public

SURVEYOR'S CERTIFICATION

I, A. Dwain Weaver, under the laws of New Mexico, certify that I am a registered Land Surveyor, and that this plat was prepared by me or under my supervision, shows all easements of record, meets the minimum requirements for monumentation and surveys contained in the Albuquerque Subdivision Ordinance, and is true and accurate to the best of my knowledge and belief.

A. Dwain Weaver May 23, 1984
A. Dwain Weaver Date
P.L.S. No. 6544
New Mexico

Bohannon-Huston, Inc.
4125 Carlisle Blvd., N.E.
Albuquerque, NM 87107

APPROVALS

Charles Salvestro
PLANNING DIRECTOR
DATE 7/3/84
Dan Sabo
CITY ENGINEER
A.M.A.F.C.A.
DATE 7/10/84
Thomas W. Kennedy
TRAFFIC ENGINEER
DATE 7/3/84
Alvin P. Pugh
CITY SURVEYOR
DATE 6/5/84
Rene Elmell
PROPERTY MANAGEMENT
DATE 6/5/84
Jan E. Eitgaard
WATER RESOURCES DEPARTMENT
DATE 7/3/84
Walter Calhoun
PARKS & RECREATION DEPARTMENT
DATE 7/3/84
Dave [Signature]
PUBLIC SERVICE COMPANY OF NEW MEXICO
DATE 06/05/84
[Signature]
MOUNTAIN BELL

NOTES

1. Bearings are New Mexico State Plane Grid Bearings (Central Zone).
2. Distances are ground distances.
3. No. 5 rebar with 1-1/4" red plastic survey cap stamped "LS 6544" were set on corners designated by ©
4. No. 5 rebar with 1-1/2" aluminum survey cap stamped "LS 6544" were set on corners designated by •
5. Record bearings and distances are shown in parenthesis.

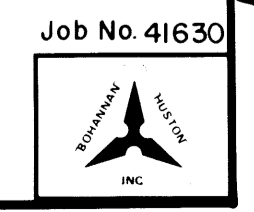
SUBDIVISION DATA

1. Zone Atlas Index No. D-23-Z.
2. Gross Subdivision Acreage: 1.5583 Acres.
3. Total Number of Lots Created: Twelve (12) Lots.
4. Date of Survey: May, 1984.

1-811-1780

SP-84-302

DRB-84-401



C24-118-1

C24-118-2

C24-118-2

TANGENT DATA		
NR.	DISTANCE	BEARING
T1	16.46'	N00°03'05"E
T2	29.66'	N14°05'47"W
T3	11.60'	N64°03'05"E
T4	7.41'	N72°54'00"W
T5	15.60'	S64°03'05"W
T6	12.50'	N64°03'05"E

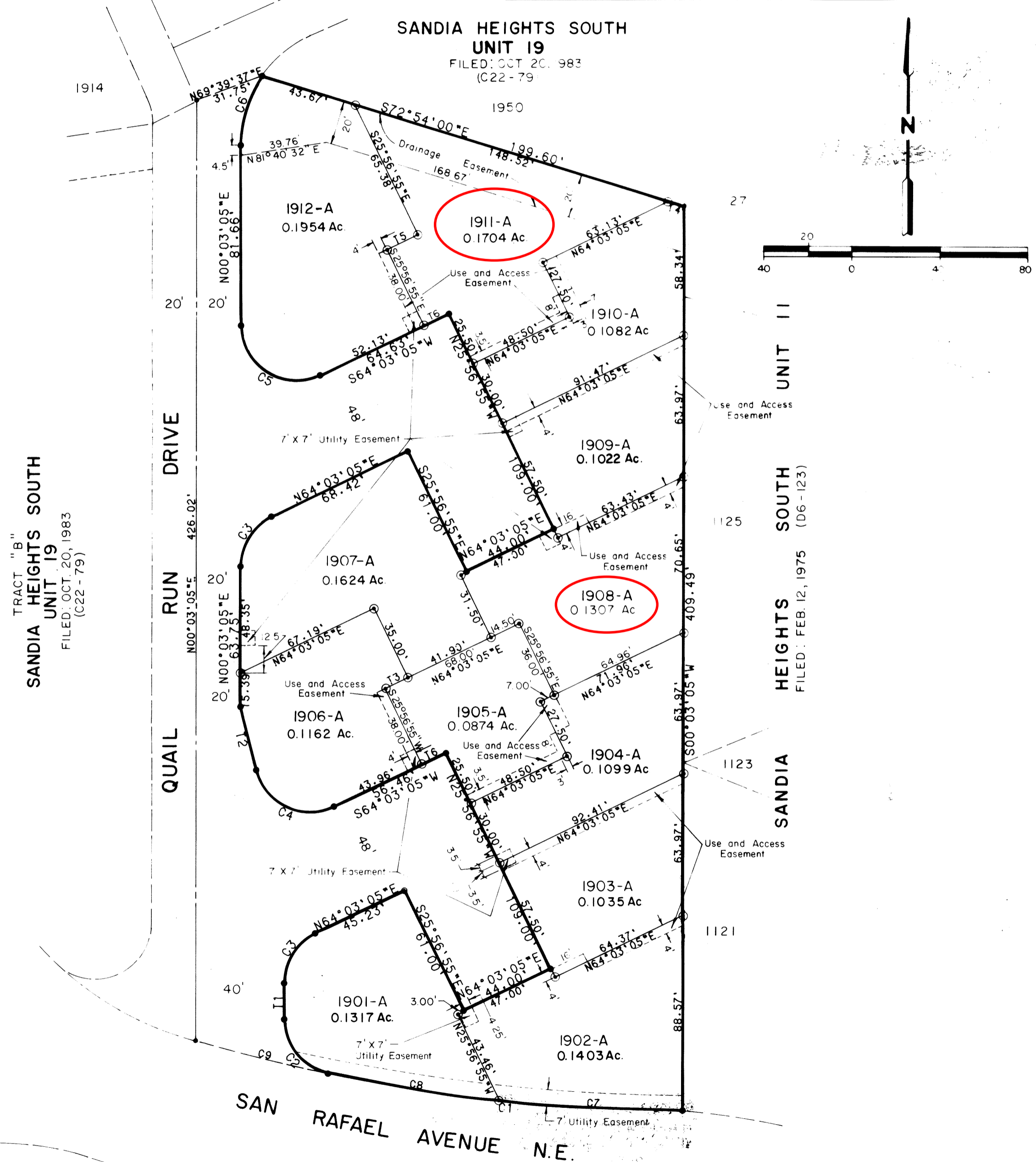
CURVE DATA				
NR.	RADIUS	ARC	CHORD	DELTA
C1	801.98'	61.69'	61.41'	33.05°
C2	25.00'	4.44'	4.44'	90.00°
C3	25.00'	4.44'	4.44'	90.00°
C4	25.00'	4.44'	4.44'	90.00°
C5	25.00'	4.44'	4.44'	90.00°
C6	25.00'	4.44'	4.44'	90.00°
C7	25.00'	4.44'	4.44'	90.00°
C8	801.98'	61.69'	61.41'	33.05°
C9	801.98'	61.69'	61.41'	33.05°

84 52739

REPLAT OF
LOTS 1901 THRU 1912
SANDIA HEIGHTS SOUTH
UNIT 19
(FILED: OCTOBER 20, 1983)

NOW COMPRISING
LOTS 1901-A THRU 1912-A
SANDIA HEIGHTS SOUTH
UNIT 19
BERNALILLO COUNTY, NEW MEXICO
MAY, 1984

State of New Mexico } SS
County of Bernalillo
This instrument was filed for record
on 9 JUL 12 1984
At 2:39 o'clock, P.M. Recorded in Vol. 1159
of Records of said County Folio 1159
A. Dwain Weaver Clerk & Recorder
Deputy Clerk



TRACT "B"
SANDIA HEIGHTS SOUTH
UNIT 19
FILED: OCT. 20, 1983
(C22 - 79)

UNIT 19
SANDIA HEIGHTS SOUTH
FILED: FEB. 12, 1975
(D6 - 123)

TRACT 2A
REPLAT OF LOT 2
SANDIA HEIGHTS SOUTH
UNIT 16
FILED: APRIL 26, 1979
(C14 - 182)

TRACT 4A
SANDIA HEIGHTS SOUTH
UNIT 17
FILED: OCT. 11, 1979
(D9 - 189)

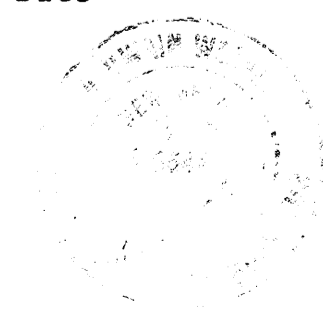
SP-84-302

SURVEYOR'S CERTIFICATION

I, A. Dwain Weaver, under the laws of New Mexico, certify that I am a registered Land Surveyor, and that this plat was prepared by me or under my supervision, shows all easements of record, meets the minimum requirements for monumentation and surveys contained in the Albuquerque Subdivision Ordinance, and is true and accurate to the best of my knowledge and belief.

A. Dwain Weaver May 23, 1984
A. Dwain Weaver Date
P.L.S. No. 6544
New Mexico

Bohannon-Huston, Inc.
4125 Carlisle Blvd., N.E.
Albuquerque, NM 87107



C24-118-2