

C24-41-2

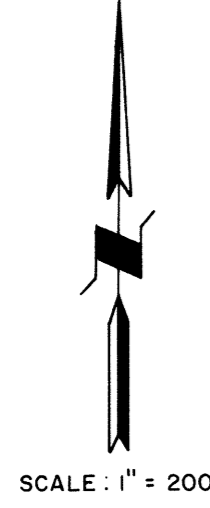
84 41917 SANDIA HEIGHTS SOUTH UNIT 15

WITHIN PROJECTED SECTIONS 23 & 26, T11N, R4E, N.M.P.M.
BERNALILLO COUNTY, NEW MEXICO

SCALE: 1" = 200'

APRIL, 1984

State of New Mexico
County of Bernalillo SS
This instrument was filed for record on
JUN 5 1984 c24
At 10:00 clock a.m. Recorded in Vol. of records of said County Folio 41 245
Clerk & Recorder



FLOOD PLAIN AREA NUMBER	ACREAGE
①	0.4478 Ac.
②	0.6004 Ac.
③	8.0814 Ac.
④	12.9358 Ac.
⑤	0.2445 Ac.
⑥	0.1993 Ac.
⑦	0.3133 Ac.

NOTE: SHADED AREA DENOTES LIMITS OF 100 YEAR FLOOD PLAIN EASEMENT.

TANGENT DATA		
NR.	DISTANCE	BEARING
T1	65.23'	S87°07'50"W
T2	260.14'	S46°57'51"W
T3	99.15'	N59°53'21"W

CURVE DATA					
NR.	RADIUS	ARC	CHORD	DELTA	TANGENT
C1	927.28'	555.75'	547.47'	34°20'22"	286.50'
C2	1515.69'	590.73'	587.00'	22°19'51"	299.16'
C3	446.98'	313.35'	306.98'	40°09'59"	163.42'
C4	545.20'	696.03'	649.72'	73°08'49"	404.51'

REPLAT OF LOTS 1214 & 1215 SANDIA HEIGHTS SOUTH, UNIT 12 (Filed: Jan. 13, 1981)(C17-178)

SANDIA HEIGHTS SOUTH UNIT 12 (Filed: Feb. 12, 1975) (D6-121)

TRACT J of SUMMARY PLAT OF A PORTION OF THE ELENA GALLEGOS GRANT (Filed: June 29, 1982) (C19-183)

SANDIA HEIGHTS SOUTH UNIT 12 (Filed: Feb. 12, 1975) (D6-121)

SANDIA HEIGHTS SOUTH UNIT 14 (Filed: Feb. 12, 1975) (D6-124)

U.S. FOREST SERVICE LAND TRACT A of SUMMARY PLAT OF A PORTION OF THE ELENA GALLEGOS GRANT (Filed: June 29, 1982) (C19-183)

TRACT I of SUMMARY PLAT OF A PORTION OF THE ELENA GALLEGOS GRANT (Filed: June 29, 1982) (C19-183)

TRACT D 50' ACCESS ROAD SUMMARY PLAT OF A PORTION OF THE ELENA GALLEGOS GRANT (Filed: June 29, 1982) (C19-183)

ACS STATION I-D24
PROJECTED SECTION CORNER
N.M. STATE PLANE COORDINATES
X = 431,318.50
Y = 1,513,365.05
2nd Order
 $\Delta\alpha = -00^{\circ}07'56''$
GROUND TO GRID FACTOR = 0.9996059

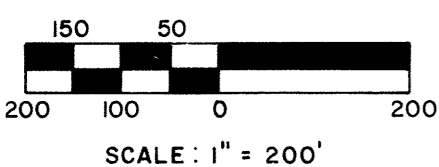
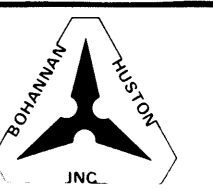
SURVEYOR'S CERTIFICATION

I, A. Dwain Weaver, under the laws of New Mexico, certify that I am a registered Land Surveyor, and that this plat was prepared by me or under my supervision, shows all easements of record, meets the minimum requirements for monumentation and surveys contained in the Albuquerque Subdivision Ordinance, and is true and accurate to the best of my knowledge and belief.

A. Dwain Weaver May 1, 1984
A. Dwain Weaver Date
P.L.S. No. 6544
New Mexico

Bohannon-Huston, Inc.
4125 Carlisle Blvd., N.E.
Albuquerque, NM 87107

JOB NO. 31125



SC5-84-6

C-14-1520

C24-41-3

SURVEYOR'S CERTIFICATION

I, A. Dwain Weaver, under the laws of New Mexico, certify that I am a registered Land Surveyor, and that this plat was prepared by me or under my supervision, shows all easements of record, meets the minimum requirements for monumentation and surveys contained in the Albuquerque Subdivision Ordinance, and is true and accurate to the best of my knowledge and belief.

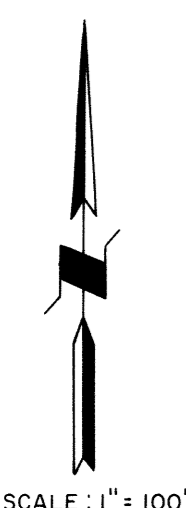
A. Dwain Weaver May 1, 1984
A. Dwain Weaver Date
P.L.S. No. 6544
New Mexico

Bohannon-Huston, Inc.
4125 Carlisle Blvd., N.E.
Albuquerque, NM 87107

SANDIA HEIGHTS SOUTH 84 41917
UNIT 15

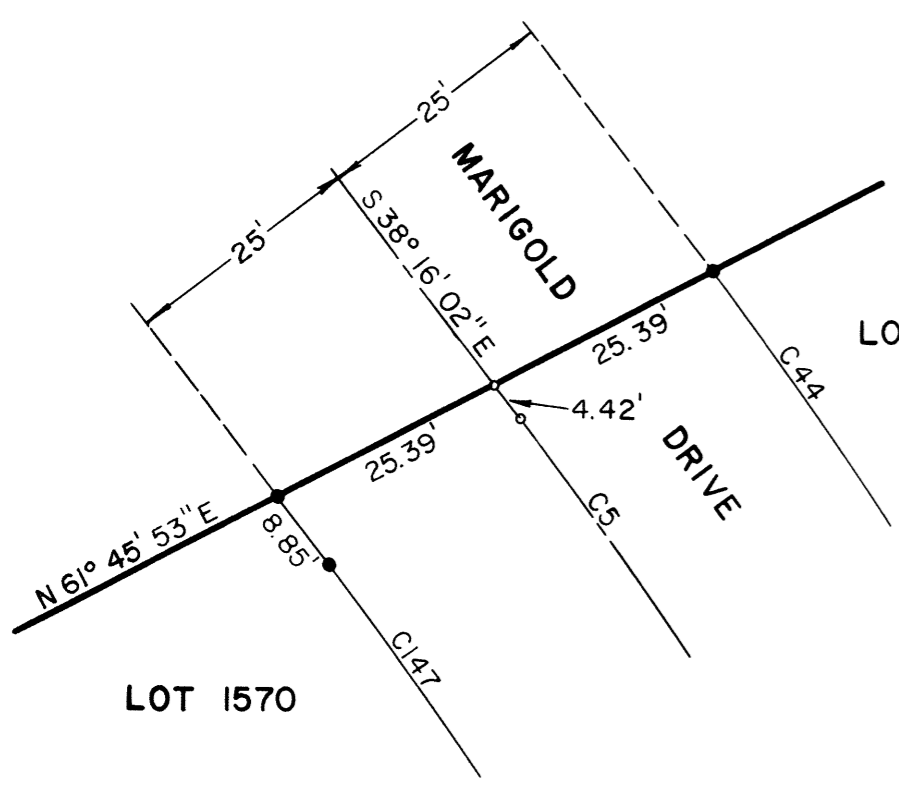
WITHIN PROJECTED SECTIONS 23 & 26, T11N, R4E, N.M.P.M.
BERNALILLO COUNTY, NEW MEXICO
SCALE: 1" = 100' APRIL, 1984

State of New Mexico SS
County of Bernalillo
This instrument was filed for record
on 13 JUN 5 1984 C24
at 1:00 clock p.m. Recorded in Vol. 13.45
of the records of Bernalillo County Filed
by *A. Dwain Weaver* Clerk & Recorder
Depth 100'

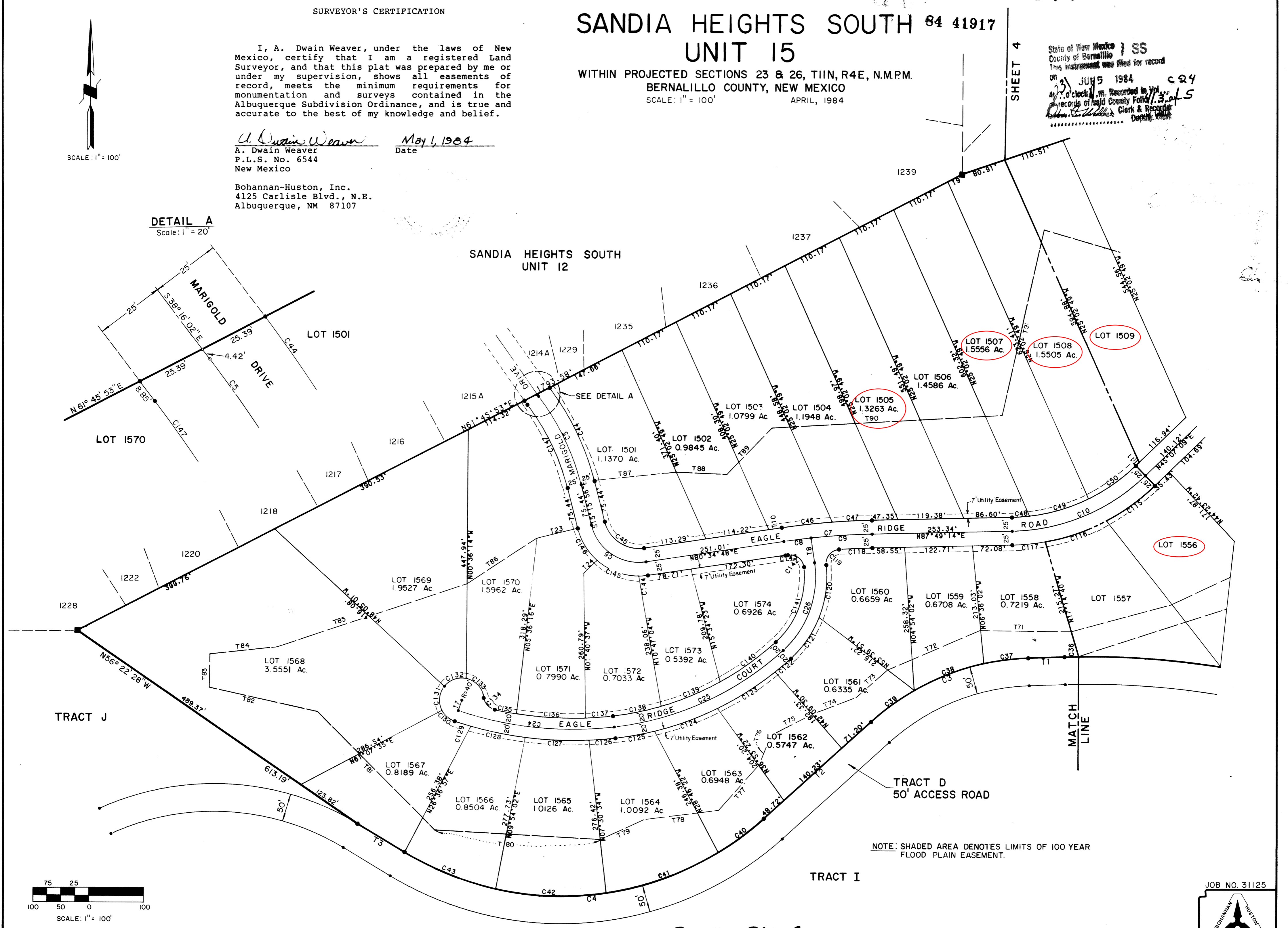


SCALE: 1" = 100'

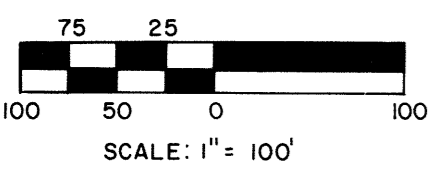
DETAIL A
Scale: 1" = 20'



SANDIA HEIGHTS SOUTH
UNIT 12

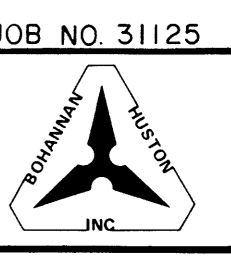


NOTE: SHADED AREA DENOTES LIMITS OF 100 YEAR FLOOD PLAIN EASEMENT.



C24-41-3

SCS-84-6



C24-41-4

SURVEYOR'S CERTIFICATION

I, A. Dwain Weaver, under the laws of New Mexico, certify that I am a registered Land Surveyor, and that this plat was prepared by me or under my supervision, shows all easements of record, meets the minimum requirements for monumentation and surveys contained in the Albuquerque Subdivision Ordinance, and is true and accurate to the best of my knowledge and belief.

A. Dwain Weaver
P.L.S. No. 6544
New Mexico
Date May 4, 1984

Bohannon-Huston, Inc.
4125 Carlisle Blvd., N.E.
Albuquerque, NM 87107

SANDIA HEIGHTS SOUTH 84 41917
UNIT 15

WITHIN PROJECTED SECTIONS 23 & 26, T11N, R4E, N.M.P.M.
BERNALILLO COUNTY, NEW MEXICO
SCALE: 1" = 100' APRIL, 1984

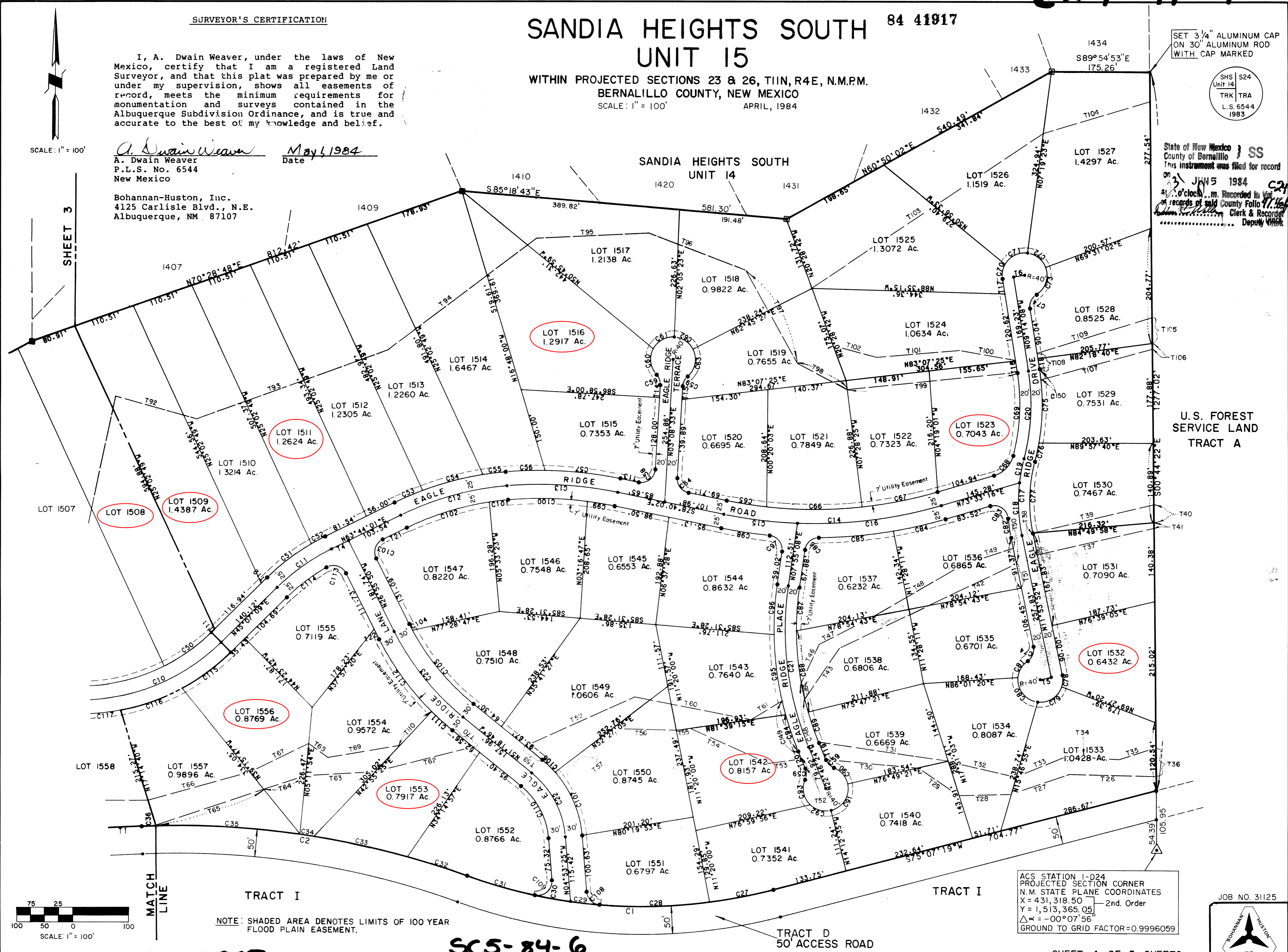
SET 3/4" ALUMINUM CAP ON 30' ALUMINUM ROD WITH CAP MARKED

SHS S24
Unit 14
TRK TRA
L.S. 6544
1983

State of New Mexico) SS
County of Bernalillo)
This instrument was filed for record on 31 JUN 5 1984
at 10:00 a.m. Recorded in Vol. 11, Page 5
of records of said County. Clerk & Recorder
Deputy Clerk

SCALE: 1" = 100'

SHEET 3



U.S. FOREST SERVICE LAND TRACT A

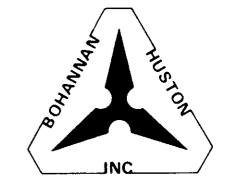
TRACT I

TRACT I

NOTE: SHADED AREA DENOTES LIMITS OF 100 YEAR FLOOD PLAIN EASEMENT.

ACS STATION I-D24
PROJECTED SECTION CORNER
N.M. STATE PLANE COORDINATES
X = 431,318.50
Y = 1,513,365.05
2nd Order
Δα = -00°07'56"
GROUND TO GRID FACTOR = 0.9996059

JOB NO. 31125



SC5-84-6

TRACT D
50' ACCESS ROAD

SHEET 4 OF 5 SHEETS

4-14-84

SANDIA HEIGHTS SOUTH UNIT 15

WITHIN PROJECTED SECTIONS 23 & 26, T11N, R4E, N.M.P.M.
BERNALILLO COUNTY, NEW MEXICO

APRIL, 1984

State of New Mexico
County of Bernalillo
APR 25 1984
Bohannon-Huston, Inc.
Bohannon-Huston, Inc. County Clerk
Bohannon-Huston, Inc. County Clerk & Recorder

CURVE DATA

NR.	RADIUS	ARC	CHORD	DELTA	TANGENT
C1	927.28'	555.75'	547.47'	34°20'22"	286.50'
C2	1515.69'	590.73'	587.00'	22°19'51"	590.16'
C3	446.98'	313.35'	306.98'	40°09'59"	163.42'
C4	545.20'	696.03'	649.72'	73°08'49"	404.51'
C5	442.33'	177.58'	176.39'	23°00'06"	90.00'
C6	88.61'	130.15'	118.76'	84°09'17"	80.00'
C7	1264.39'	159.79'	159.69'	07°14'27"	80.00'
C8	1264.39'	159.79'	159.69'	02°14'41"	24.77'
C9	1264.39'	110.25'	110.21'	04°59'45"	55.16'
C10	358.14'	266.92'	260.78'	42°42'06"	140.00'
C11	366.11'	118.94'	118.42'	18°36'52"	60.00'
C12	534.63'	197.72'	196.59'	21°11'21"	100.00'
C13	693.52'	198.63'	197.95'	16°24'36"	100.00'
C14	808.82'	392.13'	388.30'	27°46'42"	200.00'
C15	808.82'	132.30'	132.15'	09°22'20"	66.30'
C16	808.82'	259.83'	258.72'	18°24'22"	131.04'
C17	298.33'	137.51'	136.30'	26°24'34"	70.00'
C18	298.33'	93.97'	93.58'	18°02'47"	47.38'
C19	298.33'	43.55'	43.51'	08°21'48"	21.81'
C20	380.49'	157.70'	156.58'	23°44'50"	80.00'
C21	546.58'	292.79'	289.30'	30°41'32"	150.00'
C22	163.23'	132.26'	128.67'	46°25'21"	70.00'
C23	462.86'	196.97'	195.49'	24°22'56"	100.00'
C24	653.89'	285.38'	283.12'	25°00'22"	145.00'
C25	544.75'	340.35'	334.84'	35°47'48"	175.93'
C26	178.42'	174.49'	167.71'	58°03'55"	95.00'
C27	927.28'	115.80'	115.72'	07°09'18"	57.97'
C28	927.28'	197.58'	197.21'	12°12'30"	99.17'
C29	927.28'	51.88'	51.88'	03°12'21"	25.95'
C30	927.28'	64.20'	64.18'	03°58'00"	32.11'
C31	927.28'	126.29'	126.20'	07°48'13"	63.24'
C32	1515.69'	111.18'	111.15'	04°12'10"	55.61'
C33	1515.69'	170.13'	170.04'	06°25'53"	85.16'
C34	1515.69'	26.07'	26.07'	00°59'08"	13.04'
C35	1515.69'	257.90'	257.59'	09°44'57"	129.26'
C36	1515.69'	25.45'	25.45'	00°57'43"	12.72'
C37	446.98'	81.26'	81.15'	10°24'58"	40.74'
C38	446.98'	135.34'	134.82'	17°20'54"	68.19'
C39	446.98'	96.75'	96.56'	12°24'07"	48.57'
C40	545.20'	102.54'	102.39'	10°46'35"	51.42'
C41	545.20'	215.93'	214.52'	22°41'32"	109.40'
C42	545.20'	200.35'	199.22'	21°03'17"	101.32'
C43	545.20'	177.21'	176.43'	18°37'24"	89.39'
C44	467.33'	186.61'	186.36'	23°00'06"	95.09'
C45	63.61'	93.43'	85.25'	84°09'17"	57.43'
C46	1289.39'	91.71'	91.69'	04°04'31"	45.88'
C47	1289.39'	71.23'	71.23'	03°09'55"	35.63'
C48	333.14'	32.17'	32.16'	05°32'00"	16.10'
C49	333.14'	111.53'	111.01'	19°10'55"	56.29'
C50	333.14'	104.58'	104.15'	17°59'10"	52.72'
C51	391.11'	98.53'	98.27'	14°26'05"	49.53'
C52	391.11'	28.52'	28.52'	04°10'47"	14.27'
C53	559.63'	54.95'	54.03'	05°32'03"	27.05'
C54	559.63'	111.90'	111.71'	11°27'23"	56.14'
C55	559.63'	41.01'	41.00'	04°11'55"	20.51'
C56	718.52'	70.03'	70.00'	05°35'03"	35.04'
C57	718.52'	135.76'	135.56'	10°49'33"	68.08'
C58	25.00'	42.84'	37.79'	98°11'25"	28.86'
C59	25.00'	20.15'	19.61'	46°11'13"	10.66'
C60	40.00'	49.30'	46.24'	70°37'22"	28.33'
C61	40.00'	45.77'	43.32'	65°33'51"	25.76'
C62	40.00'	41.62'	39.77'	59°36'54"	22.92'
C63	40.00'	53.46'	49.57'	76°34'19"	31.57'
C64	25.00'	35.70'	32.74'	81°48'35"	21.66'
C65	783.82'	72.10'	72.07'	05°16'12"	36.07'
C66	783.82'	170.42'	170.08'	12°27'27"	85.55'
C67	783.82'	137.50'	137.32'	10°03'03"	68.93'
C68	50.00'	51.55'	49.30'	59°04'29"	28.33'
C69	360.49'	149.21'	148.15'	23°42'55"	75.69'
C70	40.00'	26.61'	26.12'	38°07'07"	13.82'
C71	40.00'	44.78'	44.99'	58°26'24"	27.20'
C72	40.00'	43.42'	41.32'	62°11'39"	24.13'
C73	40.00'	54.89'	50.69'	78°37'38"	32.76'
C74	25.00'	29.40'	27.74'	67°22'48"	16.67'
C75	400.49'	132.13'	131.53'	18°54'12"	66.67'
C76	400.49'	33.86'	33.85'	04°50'38"	16.94'
C77	278.33'	128.29'	127.16'	26°24'34"	65.31'
C78	40.00'	20.91'	20.67'	29°56'51"	10.70'
C79	40.00'	54.79'	50.61'	78°29'12"	32.67'
C80	40.00'	61.72'	55.78'	88°24'22"	38.90'
C81	40.00'	35.28'	34.15'	50°32'24"	18.88'
C82	318.33'	35.01'	34.99'	06°18'03"	17.52'
C83	25.00'	44.00'	38.54'	100°50'55"	30.25'
C84	833.82'	94.95'	94.90'	06°31'29"	47.53'
C85	833.82'	133.94'	133.80'	09°12'13"	67.11'
C86	25.00'	35.50'	32.59'	81°21'50"	21.49'
C87	526.58'	77.81'	77.74'	08°27'57"	38.97'
C88	526.58'	146.23'	146.23'	15°57'45"	73.83'
C89	526.58'	57.57'	57.54'	06°15'49"	29.81'
C90	40.00'	39.83'	38.21'	57°03'14"	21.74'
C91	40.00'	61.22'	55.42'	87°41'48"	38.42'
C92	40.00'	39.94'	38.30'	57°12'53"	21.82'
C93	40.00'	49.15'	46.12'	70°24'32"	28.22'
C94	566.58'	68.59'	68.55'	06°56'09"	34.34'
C95	566.58'	144.71'	144.31'	14°38'00"	72.75'
C96	566.58'	90.21'	90.12'	09°07'21"	45.20'
C97	25.00'	40.40'	36.15'	92°36'00"	26.16'
C98	833.82'	87.52'	87.48'	06°00'50"	43.80'
C99	668.52'	49.83'	49.82'	04°16'14"	24.93'
C100	668.52'	141.64'	141.38'	12°08'22"	71.09'
C101	509.63'	33.93'	33.93'	03°48'54"	16.97'
C102	509.63'	154.54'	153.95'	17°22'27"	77.87'
C103	25.00'	39.56'	35.56'	90°39'51"	25.29'
C104	432.86'	12.83'	12.83'	01°41'55"	6.42'
C105	432.86'	171.37'	170.26'	22°41'01"	86.82'
C106	193.23'	31.71'	31.71'	09°24'07"	15.89'
C107	193.23'	124.85'	122.69'	37°01'14"	64.89'
C108	25.00'	35.18'	32.35'	80°37'28"	21.21'
C109	25.00'	46.49'	40.08'	106°32'53"	33.51'
C110	133.23'	107.95'	105.02'	46°25'21"	57.14'
C111	492.86'	49.48'	49.46'	05°45'06"	24.76'
C112	492.86'	160.26'	159.56'	18°37'50"	80.84'
C113	25.00'	40.60'	36.28'	93°02'21"	26.36'
C114	341.11'	88.77'	88.52'	14°54'40"	44.64'
C115	383.14'	108.46'	108.09'	16°13'07"	54.59'
C116	383.14'	117.07'	116.62'	17°30'26"	59.00'
C117	383.14'	60.02'	59.96'	08°58'33"	30.07'
C118	1239.39'	60.20'	60.19'	02°46'58"	30.10'
C119	25.00'	40.35'	36.11'	92°28'02"	26.10'
C120	198.42'	96.72'	95.77'	27°55'47"	49.34'
C121	198.42'	90.54'	89.76'	26°08'41"	46.07'
C122	564.75'	37.23'	37.22'	03°46'37"	18.62'
C123	564.75'	123.16'	122.92'	12°29'42"	61.83'
C124	564.75'	120.90'	120.67'	12°15'57"	60.68'
C125	564.75'	71.55'	71.50'	07°15'32"	35.82'
C126	673.89'	48.01'	48.00'	04°04'55"	24.02'
C127	673.89'	115.49'	115.35'	09°49'10"	57.89'
C128	673.89'	99.61'	99.52'	08°28'08"	49.89'
C129	673.89'	31.00'	31.00'	02°38'09"	15.50'
C130	40.00'	30.49'	29.76'	43°40'43"	16.03'
C131	40.00'	46.50'	43.93'	66°36'43"	26.28'
C132	40.00'	44.07'	41.87'	63°07'18"	24.57'
C133	40.00'	49.73'	46.59'	71°13'40"	28.85'
C134	25.00'	30.62'	28.74'	70°10'33"	17.56'
C135	633.89'	41.28'	41.27'	03°43'53"	20.65'
C136	633.89'	124.38'	124.18'	11°14'32"	62.39'
C137	633.89'	49.75'	49.74'	04°29'48"	24.89'
C138	524.75'	88.98'	88.88'	09°42'57"	44.60'
C139	524.75'	115.62'	115.39'	12°37'27"	58.04'
C140	524.75'	123.25'	122.96'	13°27'25"	61.91'
C141	158.42'	150.16'	144.60'	54°18'25"	81.25'
C142	25.00'	39.95'	35.83'	91°32'55"	25.68'
C143	1239.39'	4.55'	4.55'	00°12'38"	2.28'
C144	113.61'	16.41'	16.39'	08°16'28"	8.22'
C145	113.61'	81.95'	80.18'	41°19'43"	42.85'
C146	113.61'	68.51'	67.48'	34°33'06"	35.33'
C147	417.33'	167.54'	166.42'	23°00'06"	84.91'
C148	526.58'	30.00'	30.00'	03°15'51"	15.00'
C149	566.58'	93.59'	93.48'	09°27'51"	46.90'
C150	400.49'	20.00'	20.00'	02°51'41"	10.00'

TANGENT DATA

NR.	DISTANCE	BEARING
T1	65.23'	S87°07'50"W
T2	260.14'	S46°57'51"W
T3	99.15'	N59°53'21"W
T4	34.00'	N63°44'01"E
T5	20.00'	N78°06'08"E
T6	20.00'	N80°45'52"E
T7	20.00'	S17°26'52"W
T8	44.94'	N09°25'12"W
T9	29.51'	N61°45'53"E
T10	23.50'	N80°34'48"E
T11	8.19'	N45°07'09"E
T12	14.99'	N45°07'09"E
T13	32.99'	S78°40'02"E
T14	22.97'	N03°08'33"E
T15	24.03'	S03°08'33"W
T16	21.35'	N09°14'08"W
T17	27.26'	N09°14'08"W
T18	19.19'	S09°14'08"E
T19	33.02'	S22°46'24"E
T20	33.02'	N22°46'24"W
T21	47.96'	S63°44'01"W
T22	19.98'	N26°55'50"W
T23	75.30'	N75°26'23"E
T24	33.59'	N45°11'25"E
T25	25.00'	N00°44'22"W
T26	152.71'	N88°52'25"W
T27	111.59'	S71°05'12"W
T28	93.03'	S88°25'09"W
T29	86.65'	N55°51'56"W
T30	165.95'	N85°28'19"W
T31	232.47'	S82°15'08"E
T32	124.36'	S77°14'20"E
T33	95.09'	N67°30'33"E
T34	98.08'	S97°39'46"E
T35	66.35'	N71°34'32"E
T36	51.00'	S00°44'22"E
T37	212.93'	S77°04'12"W
T38	39.00'	N11°53'52"W
T39	221.11'	N76°32'11"E
T40	32.00'	S00°44'22"E
T41	10.00'	S00°44'22"E
T42	348.32'	S64°12'43"W
T43	110.42'	S34°36'06"W
T46	76.08'	N26°01'50"E
T47	107.37'	N62°24'39"E
T48	184.24'	N59°44'30"E
T49	93.97'	N71°39'20"E
T50	28.00'	S11°53'52"E
T51	44.37'	S11°53'52"E