

D8-4

D8-4

181-94 A-80

A-80 181-94

OK by the original
DR by Mapping Dept
8-25-77

421 A

SANDIA HEIGHTS SOUTH UNIT 9

A SUBDIVISION IN BERNILLO COUNTY, NEW MEXICO

JANUARY 1973

SCALE 1" = 100'

- Notes:
- An easement for utilities, seven feet in width, is reserved from each lot along each street right-of-way and along the south boundary of this subdivision. Additional easements are indicated by dashed lines. Those not otherwise designated are drainage easements in which construction is prohibited.
 - The streets and roads dedicated hereon have not been accepted for construction or maintenance by Bernalillo County and the responsibility therefore remains with the owner and proprietor.
 - Bearings furnished by Ross Howard Company and referenced to the right-of-way maps for Tramway Blvd.
 - Natural drainage channels shall not be changed by any construction.
 - Land within this plat shall be developed in accordance with Drainage Plan prepared by Bohannon Westman Durkin & Assoc.

This subdivision of a certain tract of land situate in the Elena Gallegos Grant, Bernalillo County, New Mexico and being more particularly described as follows:

Beginning at the northeast corner of this tract which is also the southeast corner of SANDIA HEIGHTS SOUTH UNIT 4, a subdivision filed in the office of the Bernalillo County Clerk on February 2, 1972, and running thence S 00° 03' 35" E, 511.77 feet along the west boundary of SANDIA HEIGHTS SOUTH UNIT 4, a subdivision similarly filed on August 3, 1971, to the southwest corner of said Unit 3, thence N 89° 56' 29" E, 60.00 feet along the south boundary of said Unit 3, thence S 03° 04' 30" E, 230.59 feet, thence S 20° 00' 00" E, 533.24 feet, thence S 80° 00' 00" W, 287.85 feet, thence S 30° 29' 50" E, 528.53 feet, thence S 80° 25' 36" E, 550.00 feet to the southeast corner, thence S 81° 34' 24" W, 270.00 feet to the southwest corner, thence N 37° 09' 54" W, 672.64 feet, thence N 00° 07' 27" W, 1523.33 feet to the north-south boundary of said Unit 4 to the place of beginning; together with a 60 foot road right of way extending from the west boundary of this tract to the Tramway Boulevard right of way.

Appearing on this plat, is with the free consent and in the accordance with the desire of the undersigned owners and proprietors of the land, including all easements and rights-of-way as shown.

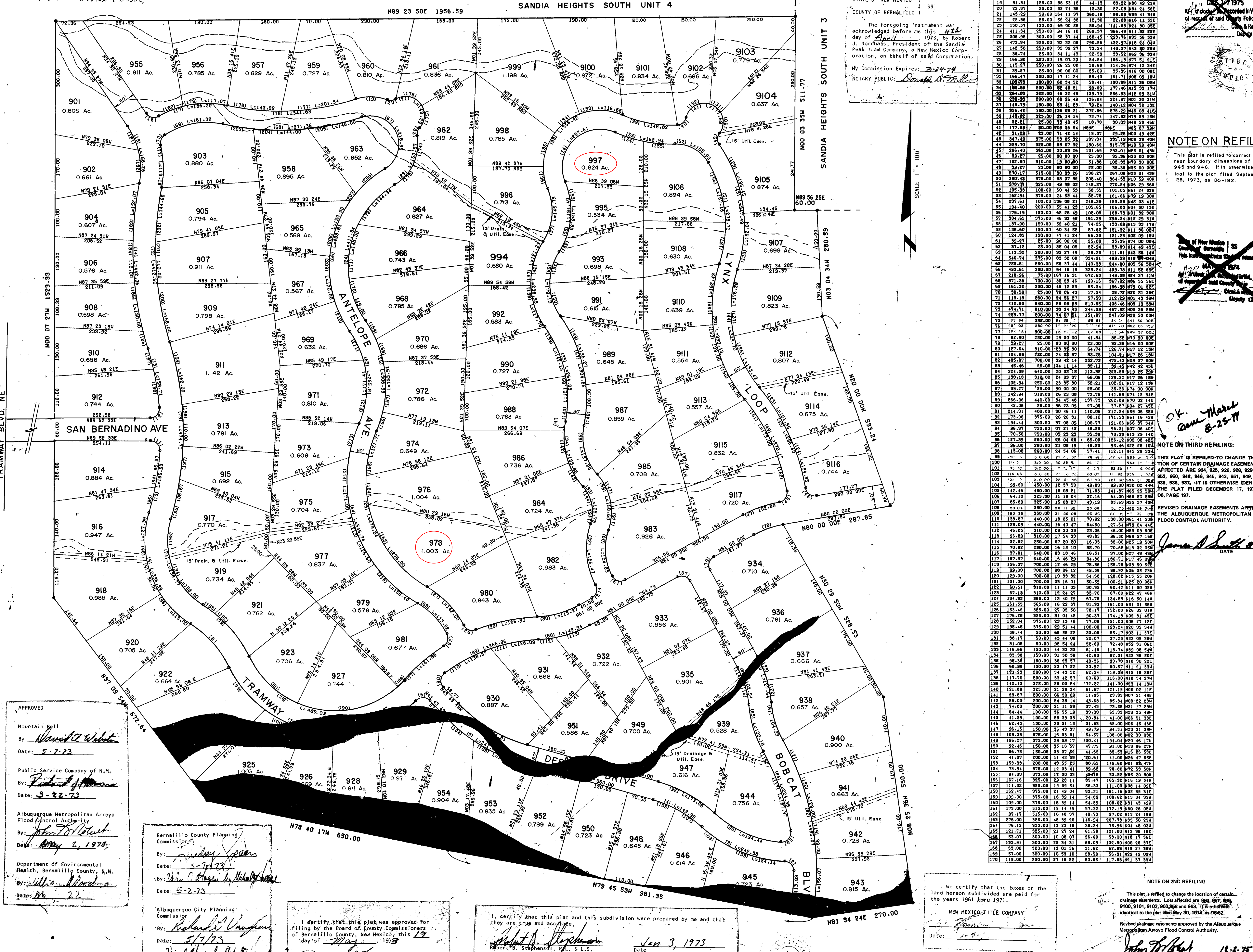
SANDIA PEAK TRAM COMPANY
 By: *Robert J. Nordhaus*, President
 Attest: *Robert J. Nordhaus*, Secretary

CURVE TABLE					
NO.	LENGTH	ADIUS	DELTA	TAN	CH. BEG.
171	148.00	250.00	33 55 09	76.24	145.85
172	144.34	250.00	33 55 09	76.24	145.85
173	82.49	125.00	31 48 36	42.81	81.00
174	68.08	125.00	31 48 36	42.81	81.00
175	44.28	125.00	31 48 36	42.81	81.00
176	78.01	150.00	30 38 21	50.47	71.04
177	201.54	650.00	17 45 36	101.59	200.74
178	145.23	650.00	17 45 36	101.59	200.74
179	117.07	650.00	17 45 36	101.59	200.74
180	89.13	650.00	17 45 36	101.59	200.74
181	61.35	650.00	17 45 36	101.59	200.74
182	33.57	650.00	17 45 36	101.59	200.74
183	5.79	650.00	17 45 36	101.59	200.74
184	112.00	300.00	07 07 49	26.07	111.53
185	130.00	300.00	09 16 34	28.11	129.89
186	48.00	300.00	09 20 20	24.01	47.99
187	36.00	300.00	09 18 41	28.01	35.99
188	102.71	750.00	07 59 48	51.44	102.63
189	82.74	750.00	06 02 24	36.26	82.74
190	22.74	750.00	06 02 24	36.26	82.74
191	48.00	300.00	07 07 49	26.07	47.53
192	47.89	300.00	05 05 08	79.24	47.53
193	98.00	300.00	08 40 13	19.52	97.98

CURVE TABLE					
NO.	LENGTH	ADIUS	DELTA	TAN	CH. BEG.
194	158.00	300.00	45 15 50	85.38	153.92
195	129.77	300.00	28 55 01	51.48	126.70
196	108.47	300.00	07 41 13	34.45	108.59
197	86.04	300.00	06 13 40	44.07	86.00
198	116.00	300.00	07 45 36	55.08	109.92
199	168.00	300.00	11 35 00	84.30	161.71
200	158.00	300.00	10 46 37	79.23	157.71
201	110.00	300.00	07 30 11	55.08	109.92
202	144.00	300.00	08 31 47	72.48	144.11
203	81.36	700.00	06 39 33	40.73	81.31
204	144.00	700.00	11 47 52	72.85	143.70
205	144.00	700.00	11 51 01	73.87	145.74
206	102.61	300.00	19 38 48	61.81	102.11
207	23.00	300.00	08 48 24	11.31	22.99
208	158.00	300.00	11 35 00	81.41	157.10
209	120.00	300.00	22 55 06	60.81	119.20
210	89.00	300.00	16 38 52	44.83	88.67
211	84.00	300.00	11 35 00	42.41	84.00
212	171.41	350.00	39 17 03	89.23	168.08
213	92.74	375.00	14 18 20	47.32	92.00
214	171.00	375.00	35 07 37	87.01	168.08
215	156.40	375.00	18 20 33	63.11	156.00
216	155.40	375.00	23 44 38	78.93	154.29

CURVE TABLE					
NO.	LENGTH	ADIUS	DELTA	TAN	CH. BEG.
113	88.00	640.00	10 11 43	27.09	87.13
2	38.30	25.00	87 46 33	24.05	34.66
3	27.78	350.00	27 07 51	126.39	27.78
4	149.39	325.00	26 26 31	76.35	148.66
5	241.46	450.00	30 46 11	123.82	238.77
6	45.52	25.00	80 34 09	22.28	45.52
7	583.71	310.00	10 29 19	142.81	502.43
8	193.79	275.00	31 55 49	72.85	193.79
9	236.38	250.00	07 51	126.39	236.38
10	165.95	250.00	12 45 08	81.13	165.95
11	40.82	25.00	33 33 14	26.40	36.43
12	41.22	25.00	37 01 21	31.25	36.81
13	158.71	750.00	12 07 29	79.65	158.71
14	442.06	300.00	28 06 33	225.39	437.63
15	158.26	200.00	08 10 10	42.53	158.26
16	37.50	25.00	85 57 07	23.23	34.00
17	186.20	250.00	42 40 23	97.45	181.92
18	244.83	250.00	30 10 18	126.58	240.00
19	84.94	125.00	38 53 15	44.13	82.08
20	22.87	25.00	52 24 38	12.30	22.08
21	143.29	164.11	11 37	266.16	143.29
22	22.86	25.00	30 00 00	11.84	22.86
23	150.37	125.00	60 50 58	85.94	141.63
24	411.54	300.00	24 10 18	169.37	366.48
25	306.39	300.00	30 00 00	151.63	291.00
26	473.84	325.00	33 39 27	224.24	438.00
27	26.74	25.00	84 45 41	22.59	26.74
28	166.30	300.00	19 07 33	84.24	166.30
29	115.17	250.00	26 05 08	58.68	114.26
30	39.27	25.00	30 00 00	11.84	39.27
31	165.47	200.00	47 41 24	88.40	161.05
32	165.00	200.00	40 34 32	81.00	161.05
33	284.00	325.00	46 32 48	139.79	258.53
34	165.00	200.00	40 34 32	81.00	161.05
35	145.79	150.00	68 26 49	136.04	145.79
36	356.42	150.00	136 08 21	272.56	278.23
37	148.86	325.00	30 14 14	75.74	147.59
38	32.41	25.00	80 34 09	22.28	32.41
39	177.49	300.00	20 23 34	88.86	177.49
40	31.29	25.00	71 45 14	18.07	29.90
41	158.26	200.00	08 10 10	42.53	158.26
42	39.27	25.00	30 00 00	11.84	39.27
43	242.70	325.00	38 07 52	180.46	242.70
44	329.40	325.00	30 00 00	151.63	291.00
45	124.80	250.00	30 00 00	151.63	124.80
46	102.80	300.00	13 06 00	51.86	102.80
47	39.27	25.00	30 00 00	11.84	39.27
48	158.26	200.00	08 10 10	42.53	158.26
49	30.80	375.00	50 07 52	208.40	30.80
50	278.01	325.00	48 08 05	248.57	278.01
51	102.61	300.00	19 38 48	61.81	102.61
52	227.61	200.00	136 08 21	248.38	227.61
53	124.80	250.00	30 00 00	151.63	124.80
54	179.19	150.00	68 26 49	102.05	168.73
55	304.63	375.00	46 32 48	136.04	296.54
56	158.26	200.00	08 10 10	42.53	158.26
57	39.27	25.00	30 00 00	11.84	39.27
58	158.26	200.00	08 10 10	42.53	158.26
59	158.26	200.00	08 10 10	42.53	158.26
60	158.26	200.00	08 10 10	42.53	158.26
61	158.26	200.00	08 10 10	42.53	158.26
62	158.26	200.00	08 10 10	42.53	158.26
63	158.26	200.00	08 10 10	42.53	158.26
64	158.26	200.00	08 10 10	42.53	158.26
65	158.26	200.00	08 10 10	42.53	158.26
66	158.26	200.00	08 10 10	42.53	158.26
67	158.26	200.00	08 10 10	42.53	158.26
68	158.26	200.00	08 10 10	42.53	158.26
69	158.26	200.00	08 10 10	42.53	158.26
70	158.26	200.00	08 10 10	42.53	158.26
71	158.26	200.00	08 10 10	42.53	158.26
72	158.26	200.00	08 10 10	42.53	158.26
73	158.26	200.00	08 10 10	42.53	158.26
74	158.26	200.00	08 10 10	42.53	158.26
75	158.26	200.00	08 10 10	42.53	158.26
76	158.26	200.00	08 10 10	42.53	158.26
77	158.26	200.00	08 10 10	42.53	158.26
78	158.26	200.00	08 10 10	42.53	158.26
79	158.26	200.00	08 10 10	42.53	158.26
80	158.26	200.00	08 10 10	42.53	158.26
81	158.26	200.00	08 10 10	42.53	158.26
82	158.26	200.00	08 10 10	42.53	158.26
83	158.26	200.00	08 10 10	42.53	158.26
84	158.26	200.00	08 10 10	42.53	158.26
85	158.26	200.00	08 10 10	42.53	158.26
86	158.26	200.00	08 10 10	42.53	158.26
87	158.26	200.00	08 10 10	42.53	158.26
88	158.26	200.00	08 10 10	42.53	158.26
89	158.26	200.00	08 10 10	42.53	158.26
90	158.26	200.00	08 10 10	42.53	158.26
91	158.26	200.00	08 10 10	42.53	158.26
92	158.26	200.00	08 10 10	42.53	158.26
93	158.26	200.00	08 10 10	42.53	158.26
94	158.26	200.00	08 10 10	42.53	158.26
95	158.26	200.00	08 10 10	42.53	158.26
96	158.26	200.00	08 10 10	42.53	158.26
97	158.26	200.00	08 10 10	42.53	158.26
98	158.26	200.00	08 10 10	42.53	158.26
99	158.26	200.00	08 10 10	42.53	158.26
100	158.26	200.00	08 10 10	42.53	158.26

STATE OF NEW MEXICO
 COUNTY OF BERNILLO
 The foregoing instrument was acknowledged before me this 24th day of August, 1973, by Robert J. Nordhaus, President of the Sandia Peak Tram Company, a New Mexico Corporation, on behalf of said Corporation, my Commission Expires: 3-24-74
 NOTARY PUBLIC: *Samuel B. Miller*



State of New Mexico
 County of Bernalillo
 This instrument was filed for record on
 AUG 25 1973
 County Clerk
 Deputy Clerk

STATE OF NEW MEXICO
 COUNTY OF BERNILLO
 This instrument was filed for record on
 AUG 25 1973
 County Clerk
 Deputy Clerk

NOTE ON REFINING
 This plat is refined to correct the rear boundary dimensions of Lots 945 and 946. It is otherwise identical to the plat filed September 25, 1973, as D8-182.

State of New Mexico
 County of Bernalillo
 This instrument was filed for record on
 AUG 25 1973
 County Clerk
 Deputy Clerk

NOTE ON THIRD REFINING
 THIS PLAT IS REFINED TO CHANGE THE LOCATION OF CERTAIN DRAINAGE EASEMENTS, LOTS APPLICABLE ARE 924, 925, 926, 929, 929, 964, 965, 962, 960, 946, 945, 943, 941, 949, 948, 947, 939, 936, 937, 947 IS OTHERWISE IDENTICAL TO THE PLAT FILED DECEMBER 17, 1970, BOOK 68, PAGE 197.

REVISED DRAINAGE EASEMENTS APPROVED BY THE ALBUQUERQUE METROPOLITAN ARROYO FLOOD CONTROL AUTHORITY.
 James A. Smith 8-24-73