

D4-141

D4-141

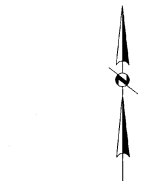
D-141

SANDIA HEIGHTS SOUTH UNIT 3
 A SUBDIVISION IN BERNALILLO COUNTY, NEW MEXICO
 JUNE 1971 SCALE: 1" = 100'

38379

The streets and roads dedicated hereon have not been accepted for construction or maintenance by Bernalillo County and the responsibility therefor remains with the owner and proprietor.

Approved as to legal form
 _____ Date



APPROVED:
 Mountain Bell by: _____ Date 7-5-71
 Public Service Company of New Mexico by: _____ Date 7-7-71
 Department of Environmental Health, Bernalillo County, New Mexico by: _____ Date 7-20-71
 Bernalillo County Planning Commission by: _____ Date 7-20-71
 Albuquerque City Planning Commission by: _____ Date 7-20-71

I certify that this plat is approved for filing by the Board of County Commissioners of Bernalillo County, New Mexico, this _____ day of _____ 1971.

Bernalillo County Clerk

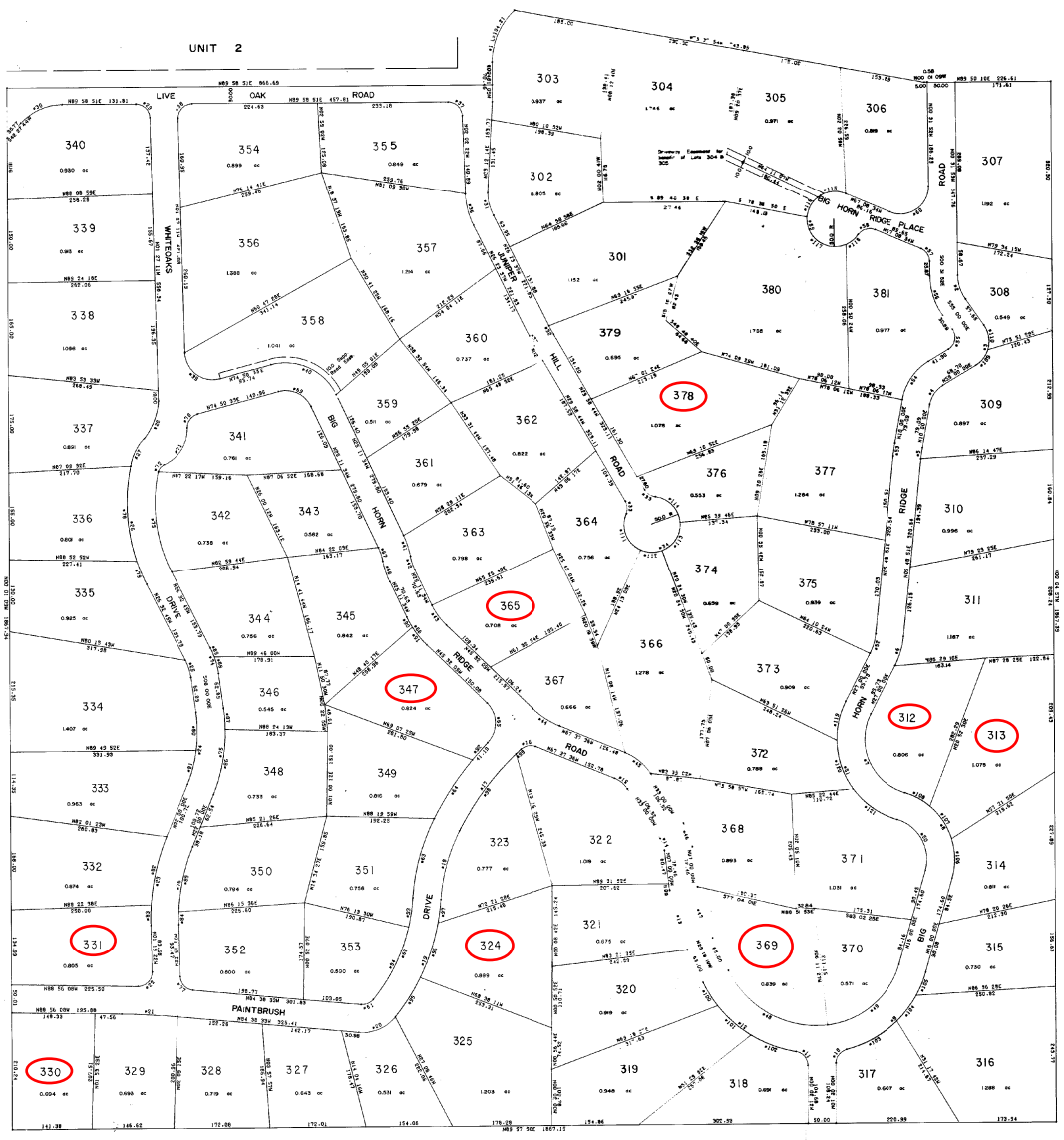
NOTES:
 1. An easement, seven feet in width, is reserved along the front of each lot adjacent to the street right-of-way for utilities.
 2. All street right-of-way widths are fifty feet except Juniper Hill Road which is forty feet.

We certify that the taxes on the land hereon subdivided are paid for the years 1950 through 1970.

NEW MEXICO TITLE COMPANY
 _____ Date 7-20-71

I certify that this plat and this subdivision were prepared by me and that they are true and accurate.

Robert S. Stephenson, P.E. & L.S.
 New Mexico Registration No. 2093



CURVE TABLE

ST. NO.	CHORD	ARC	DELTA	TANGENT	SECANT	AREA
1	104.81	104.81	90.00	104.81	104.81	104.81
2	149.82	149.82	90.00	149.82	149.82	149.82
3	194.83	194.83	90.00	194.83	194.83	194.83
4	239.84	239.84	90.00	239.84	239.84	239.84
5	284.85	284.85	90.00	284.85	284.85	284.85
6	329.86	329.86	90.00	329.86	329.86	329.86
7	374.87	374.87	90.00	374.87	374.87	374.87
8	419.88	419.88	90.00	419.88	419.88	419.88
9	464.89	464.89	90.00	464.89	464.89	464.89
10	509.90	509.90	90.00	509.90	509.90	509.90
11	554.91	554.91	90.00	554.91	554.91	554.91
12	599.92	599.92	90.00	599.92	599.92	599.92
13	644.93	644.93	90.00	644.93	644.93	644.93
14	689.94	689.94	90.00	689.94	689.94	689.94
15	734.95	734.95	90.00	734.95	734.95	734.95
16	779.96	779.96	90.00	779.96	779.96	779.96
17	824.97	824.97	90.00	824.97	824.97	824.97
18	869.98	869.98	90.00	869.98	869.98	869.98
19	914.99	914.99	90.00	914.99	914.99	914.99
20	959.00	959.00	90.00	959.00	959.00	959.00
21	1004.01	1004.01	90.00	1004.01	1004.01	1004.01
22	1049.02	1049.02	90.00	1049.02	1049.02	1049.02
23	1094.03	1094.03	90.00	1094.03	1094.03	1094.03
24	1139.04	1139.04	90.00	1139.04	1139.04	1139.04
25	1184.05	1184.05	90.00	1184.05	1184.05	1184.05
26	1229.06	1229.06	90.00	1229.06	1229.06	1229.06
27	1274.07	1274.07	90.00	1274.07	1274.07	1274.07
28	1319.08	1319.08	90.00	1319.08	1319.08	1319.08
29	1364.09	1364.09	90.00	1364.09	1364.09	1364.09
30	1409.10	1409.10	90.00	1409.10	1409.10	1409.10
31	1454.11	1454.11	90.00	1454.11	1454.11	1454.11
32	1499.12	1499.12	90.00	1499.12	1499.12	1499.12
33	1544.13	1544.13	90.00	1544.13	1544.13	1544.13
34	1589.14	1589.14	90.00	1589.14	1589.14	1589.14
35	1634.15	1634.15	90.00	1634.15	1634.15	1634.15
36	1679.16	1679.16	90.00	1679.16	1679.16	1679.16
37	1724.17	1724.17	90.00	1724.17	1724.17	1724.17
38	1769.18	1769.18	90.00	1769.18	1769.18	1769.18
39	1814.19	1814.19	90.00	1814.19	1814.19	1814.19
40	1859.20	1859.20	90.00	1859.20	1859.20	1859.20
41	1904.21	1904.21	90.00	1904.21	1904.21	1904.21
42	1949.22	1949.22	90.00	1949.22	1949.22	1949.22
43	1994.23	1994.23	90.00	1994.23	1994.23	1994.23
44	2039.24	2039.24	90.00	2039.24	2039.24	2039.24
45	2084.25	2084.25	90.00	2084.25	2084.25	2084.25
46	2129.26	2129.26	90.00	2129.26	2129.26	2129.26
47	2174.27	2174.27	90.00	2174.27	2174.27	2174.27
48	2219.28	2219.28	90.00	2219.28	2219.28	2219.28
49	2264.29	2264.29	90.00	2264.29	2264.29	2264.29
50	2309.30	2309.30	90.00	2309.30	2309.30	2309.30
51	2354.31	2354.31	90.00	2354.31	2354.31	2354.31
52	2399.32	2399.32	90.00	2399.32	2399.32	2399.32
53	2444.33	2444.33	90.00	2444.33	2444.33	2444.33
54	2489.34	2489.34	90.00	2489.34	2489.34	2489.34
55	2534.35	2534.35	90.00	2534.35	2534.35	2534.35
56	2579.36	2579.36	90.00	2579.36	2579.36	2579.36
57	2624.37	2624.37	90.00	2624.37	2624.37	2624.37
58	2669.38	2669.38	90.00	2669.38	2669.38	2669.38
59	2714.39	2714.39	90.00	2714.39	2714.39	2714.39
60	2759.40	2759.40	90.00	2759.40	2759.40	2759.40
61	2804.41	2804.41	90.00	2804.41	2804.41	2804.41
62	2849.42	2849.42	90.00	2849.42	2849.42	2849.42
63	2894.43	2894.43	90.00	2894.43	2894.43	2894.43
64	2939.44	2939.44	90.00	2939.44	2939.44	2939.44
65	2984.45	2984.45	90.00	2984.45	2984.45	2984.45
66	3029.46	3029.46	90.00	3029.46	3029.46	3029.46
67	3074.47	3074.47	90.00	3074.47	3074.47	3074.47
68	3119.48	3119.48	90.00	3119.48	3119.48	3119.48
69	3164.49	3164.49	90.00	3164.49	3164.49	3164.49
70	3209.50	3209.50	90.00	3209.50	3209.50	3209.50
71	3254.51	3254.51	90.00	3254.51	3254.51	3254.51
72	3299.52	3299.52	90.00	3299.52	3299.52	3299.52
73	3344.53	3344.53	90.00	3344.53	3344.53	3344.53
74	3389.54	3389.54	90.00	3389.54	3389.54	3389.54
75	3434.55	3434.55	90.00	3434.55	3434.55	3434.55
76	3479.56	3479.56	90.00	3479.56	3479.56	3479.56
77	3524.57	3524.57	90.00	3524.57	3524.57	3524.57
78	3569.58	3569.58	90.00	3569.58	3569.58	3569.58
79	3614.59	3614.59	90.00	3614.59	3614.59	3614.59
80	3659.60	3659.60	90.00	3659.60	3659.60	3659.60
81	3704.61	3704.61	90.00	3704.61	3704.61	3704.61
82	3749.62	3749.62	90.00	3749.62	3749.62	3749.62
83	3794.63	3794.63	90.00	3794.63	3794.63	3794.63
84	3839.64	3839.64	90.00	3839.64	3839.64	3839.64
85	3884.65	3884.65	90.00	3884.65	3884.65	3884.65
86	3929.66	3929.66	90.00	3929.66	3929.66	3929.66
87	3974.67	3974.67	90.00	3974.67	3974.67	3974.67
88	4019.68	4019.68	90.00	4019.68	4019.68	4019.68
89	4064.69	4064.69	90.00	4064.69	4064.69	4064.69
90	4109.70	4109.70	90.00	4109.70	4109.70	4109.70
91	4154.71	4154.71	90.00	4154.71	4154.71	4154.71
92	4199.72	4199.72	90.00	4199.72	4199.72	4199.72
93	4244.73	4244.73	90.00	4244.73	4244.73	4244.73
94	4289.74	4289.74	90.00	4289.74	4289.74	4289.74
95	4334.75	4334.75	90.00	4334.75	4334.75	4334.75
96	4379.76	4379.76	90.00	4379.76	4379.76	4379.76
97	4424.77	4424.77	90.00	4424.77	4424.77	4424.77
98	4469.78	4469.78	90.00	4469.78	4469.78	4469.78
99	4514.79	4514.79	90.00	4514.79	4514.79	4514.79
100	4559.80	4559.80	90.00	4559.80	4559.80	4559.80

CURVE TABLE

ST. NO.	CHORD	ARC	DELTA	TANGENT	SECANT	AREA
1	104.81	104.81	90.00	104.81	104.81	104.81
2	149.82	149.82	90.00	149.82	149.82	149.82
3	194.83	194.83	90.00	194.83	194.83	194.83
4	239.84	239.84	90.00	239.84	239.84	239.84
5	284.85	284.85	90.00	284.85	284.85	284.85
6	329.86	329.86	90.00	329.86	329.86	329.86
7	374.87	374.87	90.00	374.87	374.87	374.87
8	419.88	419.88	90.00	419.88	419.88	419.88
9	464.89	464.89	90.00	464.89	464.89	464.89
10	509.90	509.90	90.00	509.90	509.90	509.90
11	554.91	554.91	90.00	554.91	554.91	554.91
12	599.92	599.92	90.00	599.92	599.92	599.92
13	644.93	644.93	90.00	644.93	644.93	644.93
14	689.94	689.94	90.00	689.94	689.94	689.94
15	734.95	734.95	90.00	734.95	734.95	734.95
16	779.96	779.96	90.00	779.96	779.96	779.96
17	824.97	824.97	90.00	824.97	824.97	824.97
18	869.98	869.98	90.00	869.98	869.98	869.98
19	914.99	914.99	90.00	914.99	914.99	914.99
20	959.00	959.00	90.00	959.00	959.00	959.00
21	1004.01	1004.01	90.00	1004.01	1004.01	1004.01
22	1049.02	1049.02	90.00	1049.02	1049.02	1049.02
23	1094.03	1094.03	90.00	1094.03	1094.03	1094.03
24	1139.04	1139.04	90.00	1139.04	1139.04	1139.04
25	1184.05	1184.05	90.00	1184.05	1184.05	1184.05
26	1229.06	1229.06	90.00	1229.06	1229.06	1229.06
27	1274.07	1274.07	90.00	1274.07	1274.07	1274.07
28	1319.08	1319.08	90.00	1319.08	1319.08	1319.08
29	1364.09	1364.09	90.00	1364.09	1364.09	1364.09
30	1409.10	1409.10	90.00	1409.10	1409.10	1409.10
31	1454.11	1454.11	90.00	1454.11	1454.11	1454.11
32	1499.12	1499.12	90.00	1499.12	1499.12	