

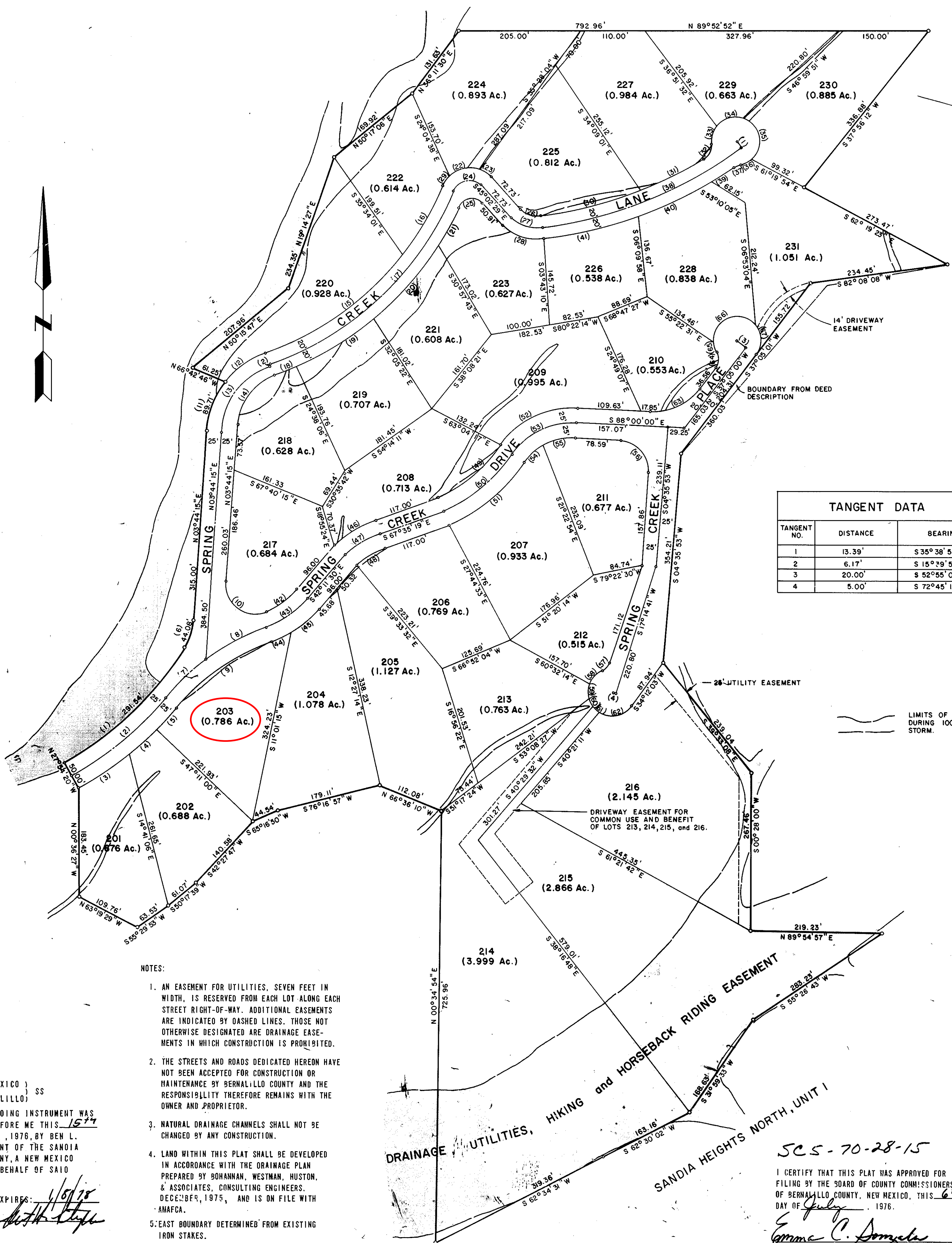
1976035866

76-25866

SANDIA HEIGHTS NORTH, UNIT 2

A SUBDIVISION IN BERNALILLO COUNTY, NEW MEXICO
FEBRUARY, 1976 SCALE: 1" = 100'

New Mexico
The instrument was filed for record on
10/30 JUL 7 1976
M. J. ... Recorded by ...
of ... County, New Mexico
...



TANGENT DATA

TANGENT NO.	DISTANCE	BEARING
1	13.39'	S 35° 38' 51" E
2	6.17'	S 15° 29' 59" W
3	20.00'	S 52° 55' 00" E
4	5.00'	S 72° 45' 19" E

CURVE DATA

CURVE NO.	RADIUS	CHORD	DELTA
1	504.65'	287.51'	33° 06' 01.6"
2	529.65'	279.74'	22° 37' 09.4"
3	554.65'	102.87'	10° 38' 32.0"
4	554.65'	60.83'	06° 17' 14.0"
5	554.65'	55.06'	05° 41' 23.4"
6	100.00'	43.72'	25° 15' 23.2"
7	400.00'	90.80'	13° 02' 00.7"
8	400.00'	118.40'	17° 01' 17.7"
9	375.00'	194.46'	30° 03' 18.4"
10	50.00'	85.77'	118° 07' 40.7"
11	150.00'	88.38'	34° 16' 00.5"
12	150.00'	82.66'	31° 59' 09.5"
13	125.00'	136.82'	66° 15' 10.0"
14	100.00'	108.75'	65° 52' 01.7"
15	514.59'	284.60'	32° 06' 22.2"
16	514.59'	134.47'	15° 00' 54.3"
17	534.59'	424.07'	46° 44' 08.1"
18	554.59'	36.83'	03° 48' 21.0"
19	554.59'	155.94'	16° 09' 51.6"
20	554.59'	162.42'	16° 50' 26.4"
21	554.59'	74.85'	07° 44' 20.6"
22	50.00'	55.03'	66° 46' 49.8"
23	50.00'	21.99'	25° 24' 31.6"
24	30.00'	49.77'	112° 05' 21.6"
25	25.00'	40.93'	109° 54' 13.1"
26	40.00'	34.74'	51° 28' 45.3"
27	60.00'	52.11'	51° 28' 45.3"
28	80.00'	69.49'	51° 28' 45.3"
29	50.00'	17.28'	19° 54' 00.1"
30	693.92'	171.11'	14° 09' 52.3"
31	693.92'	123.46'	10° 12' 26.4"
32	25.00'	26.24'	63° 18' 08.6"
33	40.00'	27.69'	40° 30' 21.3"
34	40.00'	45.46'	69° 15' 05.4"
35	40.00'	69.32'	120° 06' 18.2"
36	40.00'	24.66'	35° 54' 07.5"
37	25.00'	10.81'	24° 58' 19.7"
38	713.92'	359.03'	29° 07' 36.7"
39	733.92'	44.19'	03° 27' 01.3"
40	733.92'	136.68'	10° 41' 08.9"
41	733.92'	162.93'	12° 44' 44.6"
42	150.00'	60.88'	23° 25' 03.8"
43	175.00'	82.71'	27° 20' 18.5"
44	200.00'	32.46'	09° 18' 36.6"
45	200.00'	62.67'	18° 01' 41.8"
46	175.00'	76.94'	25° 23' 49.2"
47	150.00'	65.95'	25° 23' 49.2"
48	125.00'	54.96'	25° 23' 49.2"
49	250.00'	135.47'	31° 26' 23.1"
50	275.00'	149.01'	31° 26' 23.1"
51	300.00'	162.56'	31° 26' 23.1"
52	150.00'	140.50'	55° 51' 03.2"
53	125.00'	117.08'	55° 51' 03.2"
54	100.00'	40.84'	23° 34' 00.1"
55	100.00'	55.50'	32° 17' 03.4"
56	49.99'	72.28'	92° 35' 53.0"
57	25.00'	19.61'	46° 11' 14.0"
58	40.00'	32.76'	48° 20' 36.9"
59	40.00'	19.31'	27° 56' 19.9"
60	40.00'	13.34'	19° 12' 07.0"
61	40.00'	13.34'	19° 12' 09.2"
62	40.00'	58.77'	94° 32' 39.1"
63	100.00'	92.22'	54° 54' 58.3"
64	25.00'	27.74'	67° 22' 38.9"
65	40.00'	20.56'	29° 46' 37.9"
66	40.00'	77.10'	149° 04' 37.6"
67	40.00'	45.04'	68° 31' 33.8"

DEDICATION

THIS SUBDIVISION OF A CERTAIN TRACT OF LAND SITUATE WITHIN SMALL HOLDING CLAIM NO. 270 AND ADJOINING LAND TO THE SOUTH, ALL WITHIN SECTION 11, T11N, R4E, NMPN, BERNALILLO COUNTY, NEW MEXICO, MORE PARTICULARLY DESCRIBED AS FOLLOWS: BEGINNING AT THE SOUTHEAST CORNER, WHICH IS ALSO THE NORTHEAST CORNER OF LOT 61, SANDIA HEIGHTS NORTH, A SUBDIVISION FILED ON JANUARY 23, 1970, AND RUNNING THENCE ALONG THE NORTH BOUNDARY OF SANDIA HEIGHTS NORTH AS FOLLOWS: 283.23 FT., S 55° 26' 43" W; THENCE, 188.63 FT., S 31° 59' 33" W; THENCE, 163.16 FT., S 62° 30' 02" W; THENCE, 319.30 FT., S 62° 34' 31" W; THENCE LEAVING SAID BOUNDARY AND RUNNING 725.96 FT., N 00° 34' 54" E; THENCE, 112.08 FT., N 66° 36' 10" W; THENCE, 179.11 FT., S 76° 16' 57" W; THENCE, 44.54 FT., S 65° 16' 50" W; THENCE, 140.58 FT., S 42° 27' 47" W; THENCE, 61.07 FT., S 50° 17' 39" W; THENCE, 63.53 FT., S 55° 29' 53" W; THENCE, 109.76 FT., N 63° 19' 29" W; THENCE, 103.45 FT., N 00° 36' 27" W, TO THE SOUTHWEST CORNER; THENCE, A CURVE HAVING A LENGTH OF 291.54 FT., AND A RADIUS OF 504.65 FT.; THENCE, A CURVE HAVING A LENGTH OF 44.08 FT., AND A RADIUS OF 100.00 FT.; THENCE, 315.00 FT., N 03° 44' 15" E; THENCE, A CURVE HAVING A LENGTH OF 89.71 FT., AND A RADIUS OF 150.00 FT.; THENCE, 61.25 FT., N 66° 42' 46" W; THENCE, 207.96 FT., N 50° 15' 47" E; THENCE, 734.35 FT., N 18° 14' 27" E; THENCE, 168.92 FT., N 50° 17' 08" E; THENCE, 131.63 FT., N 36° 11' 30" E; TO THE NORTHWEST CORNER; THENCE, RUNNING 792.96 FT., N 89° 52' 52" E ALONG THE NORTH BOUNDARY OF SEC 10, T20 N, R4E, NMPN, BERNALILLO COUNTY, NEW MEXICO, MORE PARTICULARLY DESCRIBED AS FOLLOWS: BEGINNING AT THE NORTHEAST CORNER OF THIS TRACT; THENCE, 336.88 FT., S 37° 56' 12" W; THENCE, 273.47 FT., S 62° 19' 23" E; THENCE, 234.45 FT., S 82° 08' 08" W; THENCE, 360.03 FT., S 37° 05' 01" W; THENCE, 354.21 FT., S 04° 25' 53" W; THENCE, 239.04 FT., S 38° 33' 08" E; THENCE, 267.46 FT., S 00° 28' 00" W; THENCE, 219.23 FT., N 89° 54' 57" E; TO THE PLACE OF BEGINNING, CONTAINING 34,702 ACRES.

IS WITH THE FREE CONSENT AND IN ACCORDANCE WITH THE DESIRES OF THE UNDERSIGNED OWNER AND PROPRIETOR THEREOF.

ATTEST: *[Signature]* SECRETARY
[Signature] PRESIDENT

APPROVED

MOUNTAIN BELL

BY: *[Signature]*
DATE: 4-1-76

PUBLIC SERVICE COMPANY OF NEW MEXICO

BY: *[Signature]*
DATE: 4-2-76

ALBUQUERQUE METROPOLITAN ARROYO FLOOD CONTROL AUTHORITY

BY: *[Signature]*
DATE: April 9, 1976

CHAIRMAN BERNALILLO COUNTY PLANNING COMMISSION

BY: *[Signature]*
DATE: July 2, 1976

PLANNING DIRECTOR, CITY OF ALBUQUERQUE, NEW MEXICO

BY: *[Signature]*
DATE: 6-8-76

SURVEY

I, UNDER THE LAWS OF NEW MEXICO, CERTIFY THAT I AM A REGISTERED LAND SURVEYOR AND THAT THIS PLAT WAS PREPARED BY ME, SHOWS ALL EASEMENTS OF RECORD, MEETS THE MINIMUM REQUIREMENTS FOR DOCUMENTATION AND SURVEYS OF THE ALBUQUERQUE SUBDIVISION ORDINANCE, AND IS TRUE AND ACCURATE TO THE BEST OF MY KNOWLEDGE AND BELIEF.

ROBERT B. STEPHENSON, PE, L.S. NEW MEXICO REGISTRATION NO. 2903

NOTES:

1. AN EASEMENT FOR UTILITIES, SEVEN FEET IN WIDTH, IS RESERVED FROM EACH LOT ALONG EACH STREET RIGHT-OF-WAY. ADDITIONAL EASEMENTS ARE INDICATED BY DASHED LINES. THOSE NOT OTHERWISE DESIGNATED ARE DRAINAGE EASEMENTS IN WHICH CONSTRUCTION IS PROHIBITED.
2. THE STREETS AND ROADS DEDICATED HEREON HAVE NOT BEEN ACCEPTED FOR CONSTRUCTION OR MAINTENANCE BY BERNALILLO COUNTY AND THE RESPONSIBILITY THEREFORE REMAINS WITH THE OWNER AND PROPRIETOR.
3. NATURAL DRAINAGE CHANNELS SHALL NOT BE CHANGED BY ANY CONSTRUCTION.
4. LAND WITHIN THIS PLAT SHALL BE DEVELOPED IN ACCORDANCE WITH THE DRAINAGE PLAN PREPARED BY BOHANNAN, WESTMAN, HUSTON, & ASSOCIATES, CONSULTING ENGINEERS, DECEMBER, 1975, AND IS ON FILE WITH AMAFCA.
5. EAST BOUNDARY DETERMINED FROM EXISTING IRON STAKES.

STATE OF NEW MEXICO)
 COUNTY OF BERNALILLO) SS

THE FOREGOING INSTRUMENT WAS ACKNOWLEDGED BEFORE ME THIS 15th DAY OF March, 1976, BY BEN L. ABRUZZO, PRESIDENT OF THE SANDIA PEAK TRAM COMPANY, A NEW MEXICO CORPORATION, ON BEHALF OF SAID CORPORATION.

MY COMMISSION EXPIRES: 1/5/78

NOTARY PUBLIC: *[Signature]*

505-70-28-15

I CERTIFY THAT THIS PLAT WAS APPROVED FOR FILING BY THE BOARD OF COUNTY COMMISSIONERS OF BERNALILLO COUNTY, NEW MEXICO, THIS 6th DAY OF July, 1976.

[Signature]
 Bern. County Clerk

WE CERTIFY THAT THE TAXES ON THE LAND HEREON SUBDIVIDED ARE PAID FOR THE PRECEDING TEN YEARS.

NEW MEXICO TITLE COMPANY
[Signature]
 DATE: April 19, 1976

